

# ***Introduction of thesis topics***

ICT thesis contest 2015

June 5, 2015 Tallinn, Mektory conference hall

Maidu Harjak  
IBM Eesti





# IBM Academic Initiative

Resources for faculty, teachers, researchers their students



Teaching materials, guides, software access and other resources to build world-class curricula

Cloud platform to build unlimited apps and access services like Watson, IoT, Big Data, and more!

Real world challenges and new Student Developer Community for enhancing skills

*Since inception in 2004, over 50,000 faculty across 7,000+ institutions have participated in the Academic Initiative.*

**Become Academic Initiative Member**

[ibm.com/academicinitiative](http://ibm.com/academicinitiative)

**Register for the Bluemix Trial**

[ibm.biz/bluemixaicloudoffer](http://ibm.biz/bluemixaicloudoffer)

**Submit a request form for IBM Academic Initiative for Cloud**

[ibm.biz/aiforcloud](http://ibm.biz/aiforcloud)

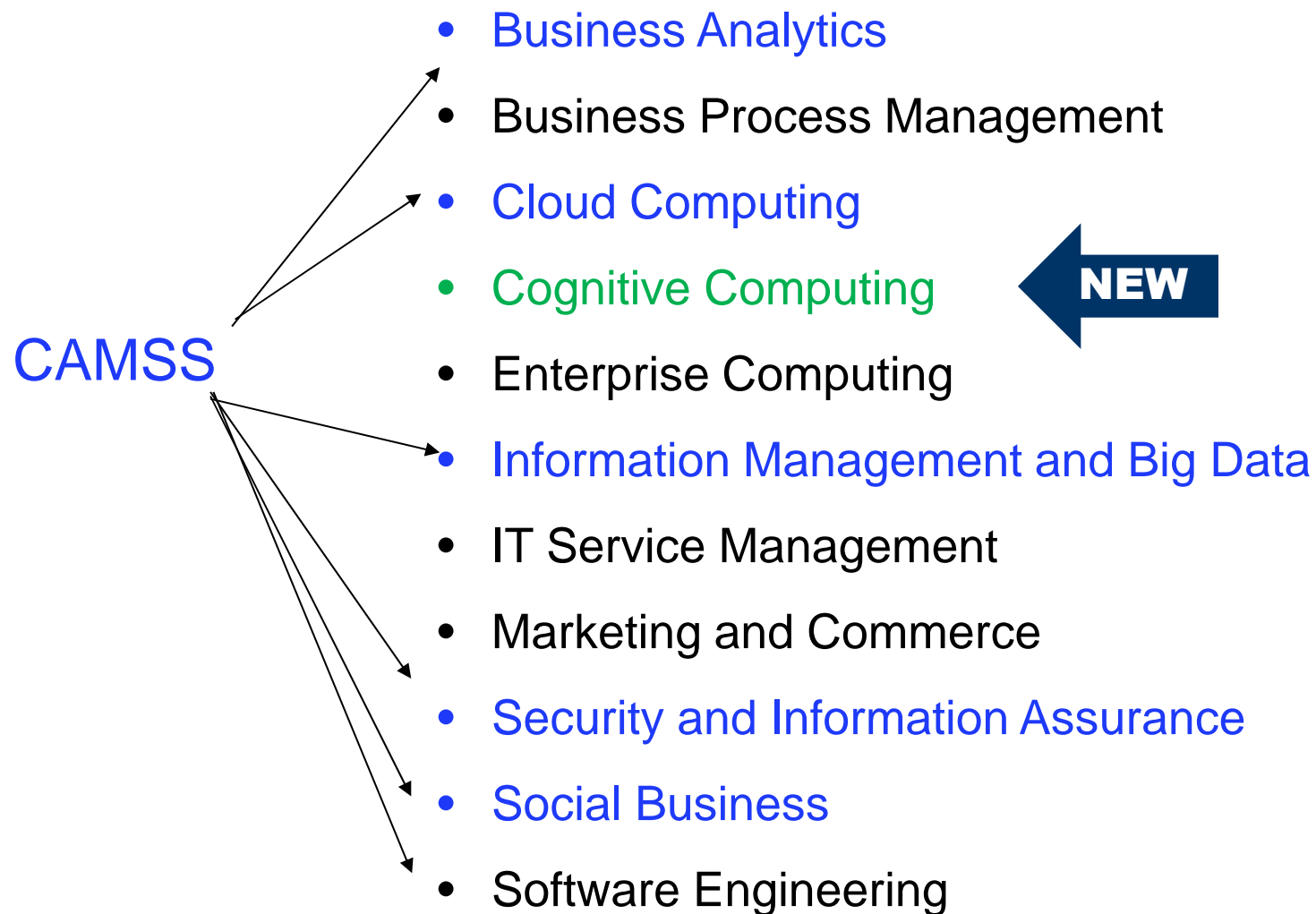


# Skills for the Future Needed Today

- Service Science
- Data Science/Analytics
- Cloud Computing
- Cyber Security
- Mobile Computing
- Social Media
- Digital Marketing
- Cognitive Computing



## Academic Initiative Teaching Topics



## Some ideas for thesis topics

- **Predictive Analytics**

- "Comparative analysis of predictive analytics models, their advantages and disadvantages"

- **Business Intelligence**

- "Deploying Business Intelligence based Cognos Express for small company"

- **Data Security**

- "The most common end-point management tools, their comparison (advantages, disadvantages)"
- "Application security testing methods: Manual testing vs. automated testing";
- "Mostly used access rights management tools and their comparison";
- "Sensitive data masking tools"

## Some ideas for thesis topics

- **Databases**

- "Time-series data collection, storage and processing,,
- "The most common databases, their comparison (advantages and disadvantages)"

- **Software Development**

- "Unified modeling language (UML) modeling tools and their comparison"

- **Cognitive Computing**

- "Unstructured data cognitive analysis based on commercial software"

## What is Cognitive Computing?

Cognitive computing systems learn and interact naturally with people to extend what either humans or machine could do on their own. They help human experts make better decisions by penetrating the complexity of Big Data.

The most important characteristics of cognitive systems are that they **understand, learn, reason and interact naturally with humans.**

For more information go to Cognitive Systems Institute Group (CSIG) Website  
<http://cognitive-science.info/>

## Watson Services examples

- **Personality Insights**

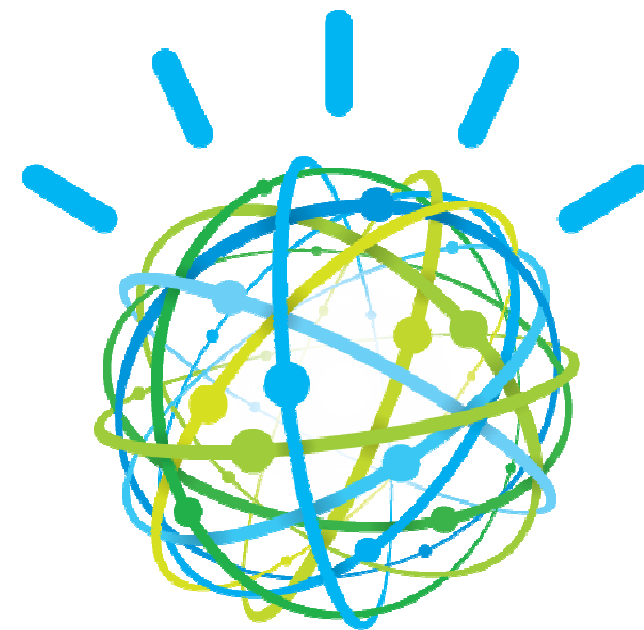
- <https://watson-pi-demo.mybluemix.net/>
- The Watson Personality Insights service uses linguistic analytics to extract a spectrum of cognitive and social characteristics from the text data that a person generates through blogs, tweets, forum posts, and more.

- **Chef Watson**

- <https://www.ibmchefwatson.com/>
- \* Remember that Chef Watson eats data, not real food. The ingredients and steps are suggestions, so be sure to use your own judgement when preparing these dishes. And, give us feedback to make the Chef smarter.



THANK  
YOU



# SUPPLEMENT



## IBM Academic Initiative for Cloud – offers by audience

Students	Faculty	Research	University
<p>100K students 6+ months TRIAL <b>More</b> NO credit card thru Faculty approved courses</p> <p>Feature Student projects on the NEW Student DevCenter <b>New</b></p>	<p>5K faculty 12+months TRIAL <b>More</b> NO credit card to teach selected courses</p> <p>Virtual and Local cloud training <b>New</b></p>	<p>26 grants <b>Leader</b> 24 months TRIAL NO credit card</p> <p>2 researchers in 13 IBM Collaborative Innovation Centers which support industry research on real-time challenges.</p>	<p>BAU subscription account pricing</p> <p>Cloud case studies and related offers featured on Education Sector website</p>

**Business Outcomes**

**5K Faculty; 100K Students**

**Phase 1: 350 faculty**  
(April-May)

**Phase 2: 1500 Faculty, 2000 students**  
(June- July)

**Phase 3: 5000 Faculty, 100K Students**  
(Aug-Dec)

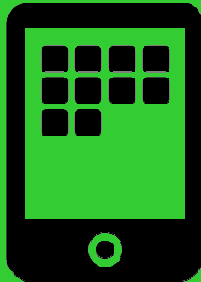
- IBM Academic Initiative for Cloud Advantages**
- 1.Unlimited Apps
  - 2.Range of Services – Watson, IOT, Big Data and MORE
  - 3.NO credit card and NOT Restricted by “Freemium” service levels
  - 4.Renewable account for faculty and students
  - 5.Industry Standards based cloud and services

LOCAL	DIGITAL:
<p>1.Academic Hackathons</p> <p>2.Face to Face Faculty meetings</p> <p>3.Student Ambassadors and Academic Rock Stars</p> <p>4.ACM (Association of Computing Machinery) International Collegiate Programming Contest</p>	<p>1.Course content for faculty</p> <p>2.Student Development Center</p> <p>3.Virtual Office Hours</p>

# Announcing the IBM Academic Initiative for Cloud

Learn skills and gain experience on IBM Bluemix:

Free Trial



Build unlimited apps and access services like Watson, IoT, Big Data, and more!

No Credit Card  
Required



You will never get charged for unexpected overage charges.

Industry-Standards  
Based



Use tools built on open source standards like Docker and Cloud Foundry

[ibm.biz/aiforcloud](http://ibm.biz/aiforcloud)

## Student

More

6+ mo. free trial  
Renewable account

New

Student projects featured on  
new Student DevCenter



## Faculty

More

12+ mo. free trial to teach  
selected courses  
Renewable account

New

Virtual and local Cloud  
training



#ibmskills

[ibm.biz/aiforcloud](http://ibm.biz/aiforcloud)

## Researchers:

Leader

24 mo. free trial to teach  
selected courses  
Renewable account  
26 grants & 2 researchers in  
13 IICs supporting industry  
research